

OFA Registry Summary by Report Year

CARDIGAN WELSH CORGI

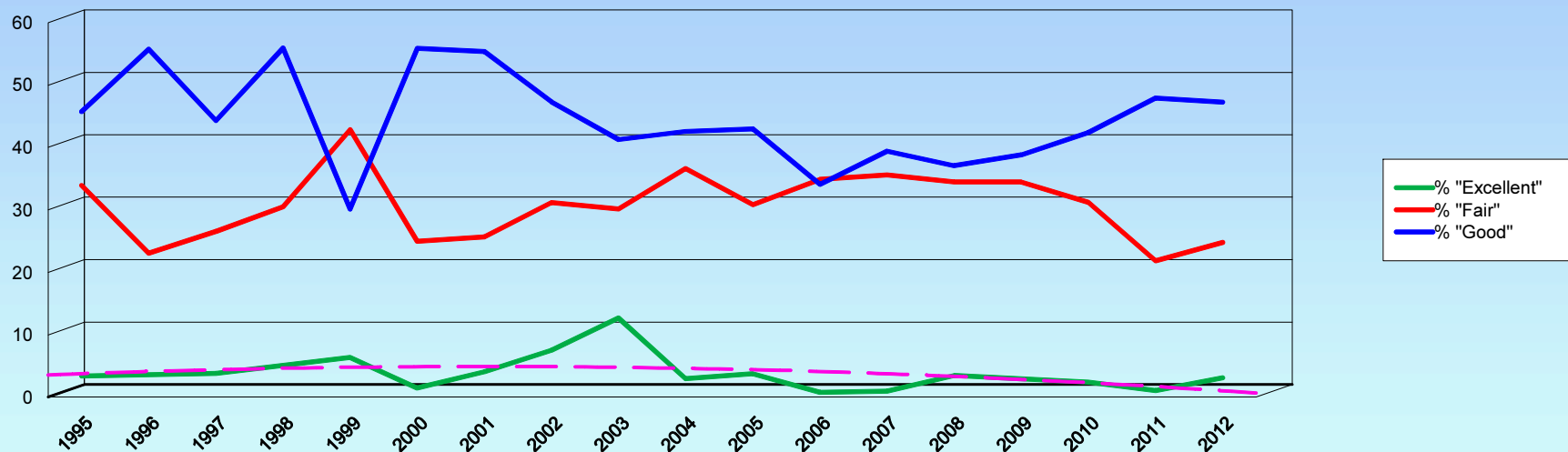
	<i>Dysplastic rank, all breeds with more than 100 cases</i>	<i>Normals</i>		<i>Equivocal or Carrier</i>		<i>Abnormal</i>		
HIPS	76 of 263	1557	77.77%	38	1.90%	407	20.33%	CHIC required
ELBOW	106 of 164	335	95.71%	3	0.86%	12	3.43%	
CARDIAC		68	100.00%	0		0		
THYROID		61	95.31%	1	1.56%	2	3.13%	
OVC HIPS		2	100.00%	0		0		
SHOULDER		1	100.00%	0		0		
OFA EYE Registry		139	97.89%	0		3	2.11%	CHIC required
DEGENERATIVE MYELOPATHY		268	50.19%	196	36.70%	70	13.11%	
PATELLA		45	93.75%	0		3	6.25%	
PROGRESSIVE RETINAL ATROPHY		81	100.00%	0		0		CHIC required
SPINE		5	21.74%	0		18	78.26%	

OFA Registry Summary by Report Year

CARDIGAN WELSH CORGI

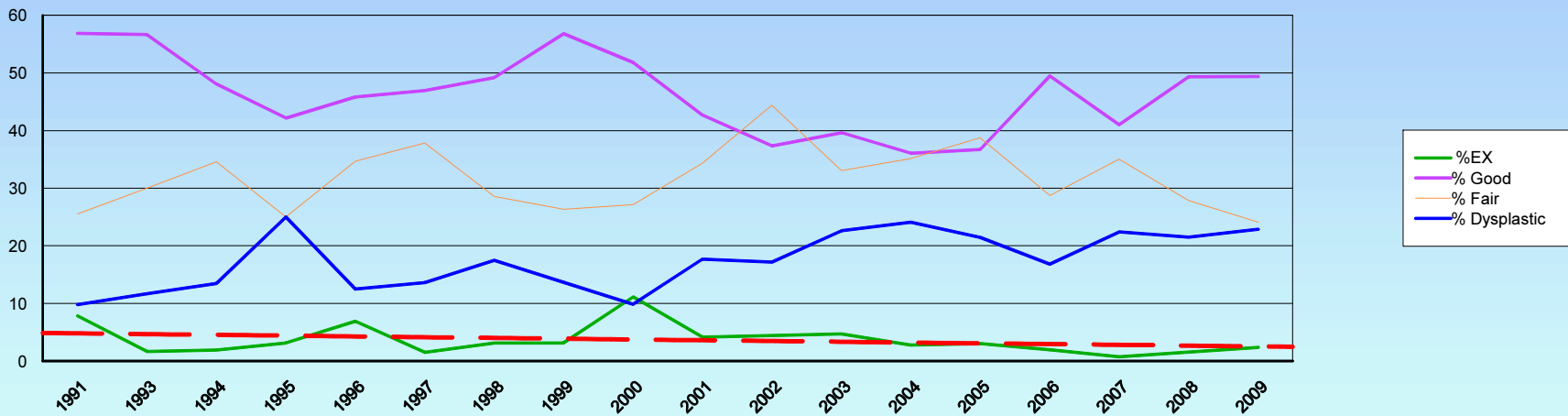
Distribution of normal hip readings by report year

Trend of "Excellent"



Hip rating distribution by birth year

trend line for excellent



OFA Registry Summary by Report Year

CARDIGAN WELSH CORGI

Percentage of cases where owners have chosen to make all results public after 2001

Clicking these labels will link to the OFA website detail for that data

	Year	Cases	Normal	Abnormal	Excellent	Good	Fair	Borderline	Mild	Moderate	Severe
Hips	1984	11	8	2 18.2		7 63.6	1 9.1	1 9.1	2 18.2		
	1985	10	10			5 50.0	5 50.0				
	1986	7	6	1 14.3		2 28.6	4 57.1			1 14.3	
	1987	9	5	4 44.4		3 33.3	2 22.2		2 22.2	1 11.1	1 11.1
	1988	18	14	4 22.2		11 61.1	3 16.7		4 22.2		
	1989	18	15	3 16.7	1 5.6	7 38.9	7 38.9		3 16.7		
	1990	34	28	6 17.7		15 44.1	13 38.2		4 11.8	2 5.9	
	1991	21	14	6 28.6		8 38.1	6 28.6	1 4.8	5 23.8		1 4.8
	1992	50	38	9 18.0	1 2.0	15 30.0	22 44.0	3 6.0	6 12.0	3 6.0	
	1993	33	31	2 6.1	3 9.1	15 45.5	13 39.4		1 3.0	1 3.0	
	1994	47	44	3 6.4	6 12.8	26 55.3	12 25.5		3 6.4		
	1995	59	49	10 17.0	2 3.4	27 45.8	20 33.9		7 11.9	3 5.1	
	1996	52	41	10 19.2		29 55.8	12 23.1	1 1.9	10 19.2		
	1997	79	59	17 21.5	3 3.8	35 44.3	21 26.6	3 3.8	15 19.0	1 1.3	1 1.3
1998	59 1.7	51	7 11.9		33 55.9	18 30.5	1 1.7	6 10.2	1 1.7		
1999	63	50	11 17.5	4 6.4	19 30.2	27 42.9	2 3.2	8 12.7	3 4.8		

OFA Registry Summary by Report Year

CARDIGAN WELSH CORGI

Percentage of cases where owners have chosen to make all results public after 2001

Clicking these labels will link to the OFA website detail for that data

	Year	Cases	Normal	Abnormal	Excellent	Good	Fair	Borderline	Mild	Moderate	Severe
Hips	2000	68	56	10 14.7	1 1.5	38 55.9	17 25.0	2 2.9	9 13.2	1 1.5	
	2001	74 14.9	63	11 14.9	3 4.1	41 55.4	19 25.7		9 12.2	2 2.7	
	2002	93 17.2	80	13 14.0	7 7.5	44 47.3	29 31.2		13 14.0		
	2003	63 7.9	53	10 15.9	8 12.7	26 41.3	19 30.2		9 14.3	1 1.6	
	2004	101 13.9	83	16 15.8	3 3.0	43 42.6	37 36.6	2 2.0	15 14.9	1 1.0	
	2005	107 28.0	83	23 21.5	4 3.7	46 43.0	33 30.8	1 0.9	17 15.9	6 5.6	
	2006	126 24.6	88	36 28.6	1 0.8	43 34.1	44 34.9	2 1.6	31 24.6	5 4.0	
	2007	104 26.0	79	23 22.1	1 1.0	41 39.4	37 35.6	2 1.9	18 17.3	4 3.9	1 1.0
	2008	116 25.9	87	26 22.4	4 3.5	43 37.1	40 34.5	3 2.6	21 18.1	5 4.3	
	2009	116 23.3	85	30 25.9		45 38.8	40 34.5	1 0.9	24 20.7	6 5.2	
	2010	125 20.8	95	27 21.6	3 2.4	53 42.4	39 31.2	3 2.4	25 20.0	2 1.6	
	2011	96 21.9	68	27 28.1	1 1.0	46 47.9	21 21.9	1 1.0	22 22.9	5 5.2	
	2012	129 13.2	97	30 23.3	4 3.1	61 47.3	32 24.8	2 1.6	23 17.8	6 4.7	1 0.8
	2013	109 19.3	72	30 27.5	3 2.8	40 36.7	29 26.6	7 6.4	23 21.1	7 6.4	
Totals	1997	1552	407 20.4	63 3.2	867 43.4	622 31.2	38 1.9	335 16.8	67 3.4	5 0.3	

OFA Registry Summary by Report Year

CARDIGAN WELSH CORGI

YEAR	All Cases	Elbows					Grade 2	Grade 3
		Normal	Abnormal	Borderline	Grade 1 dysplasia	Grade 2		
1990	1	1						
		100.0						
1993	1	1						
		100.0						
1996	2	2						
		100.0						
1997	1	1						
		100.0						
1998	3	3						
		100.0						
1999	1	1						
		100.0						
2000	3	3						
		100.0						
2001	6	5	1		1			
		83.3	16.7		100.0			
2002	13	13						
		100.0						
2003	8	8						
		100.0						
2004	11	11						
		100.0						
2005	17	16		1				
		94.1		5.9				
2006	27	26	1		1			
		96.3	3.7		100.0			
2007	28	26	2		2			
		92.9	7.1		100.0			
2008	32	31	1		1			
		96.9	3.1		100.0			
2009	35	32	1	2		1		
		91.4	2.9	5.7		100.0		
2010	45	42	3		2	1		
		93.3	6.7		66.7	33.3		
2011	28	27	1		1			
		96.4	3.6		100.0			
2012	38	36	2		1	1		
		94.7	5.3		50.0	50.0		
2013	48	48						
		100.0						
Totals	348	333	12	3	9	3		
		95.7	3.5	0.9	75.0	25.0		

OFA Registry Summary by Report Year

CARDIGAN WELSH CORGI

Thyroid

Year	All Cases	Normal	Abnormal	Autoimmune thyroiditis	Idiopathic Hypothyroidism	Equivocal
2002	1	1 100.0				
2004	1	1 100.0				
2005	6	6 100.0				
2006	10	9 90.0	1 10.0	1 10.0		
2007	7	7 100.0				
2008	11	11 100.0				
2009	4	4 100.0				
2010	7	5 71.4	1 14.3	1 14.3		1 14.3
2011	5	5 100.0				
2012	4	4 100.0				
2013	6	6 100.0				
Totals	62	59 95.2	2 3.2	2 3.2		1 1.6

OFA Registry Summary by Report Year

CARDIGAN WELSH CORGI

Patella

Year	All Cases	Normal	Abnormal
1998	1	1	
		100.0	
2002	1	1	
		100.0	
2004	2	2	
		100.0	
2005	4	3	1
		75.0	25.0
2006	2	2	
		100.0	
2007	2	2	
		100.0	
2008	9	9	
		100.0	
2009	9	8	1
		88.9	11.1
2010	7	6	1
		85.7	14.3
2011	5	5	
		100.0	
2012	4	4	
		100.0	
2013	2	2	
		100.0	
Totals	48	45	3
		93.8	6.3

OFA Registry Summary by Report Year

CARDIGAN WELSH CORGI

DNA PRA

Year	All Cases	Normal	Abnormal	Carrier
2000	1	1 100.0		
2002	1	1 100.0		
2007	6	6 100.0		
2008	9	9 100.0		
2009	3	3 100.0		
2010	11	11 100.0		
2011	29	29 100.0		
2012	12	12 100.0		
2013	9	9 100.0		
Totals	81	81 100.0		

OFA Registry Summary by Report Year

CARDIGAN WELSH CORGI

Spine

	All Cases	Normal	Abnormal
1993	1		1
			100.0
1994	1		1
			100.0
1995	1		1
			100.0
1997	4		4
			100.0
1999	3		3
			100.0
2000	1		1
			100.0
2001	2		2
			100.0
2009	3	3	
		100.0	
2010	1	1	
		100.0	
2013	2	1	1
		50.0	50.0
Totals	19	5	14
		26.3	73.7

OFA Registry Summary by Report Year

CARDIGAN WELSH CORGI

EYE Registry

	<i>All cases</i>	<i>Normal</i>	<i>Breeder Options</i>	<i>Abnormal</i>
2012	5	5 100.0		
2013	35	35 100.0		
Totals	40	40 100.0		